

FUJIKURA FE-30

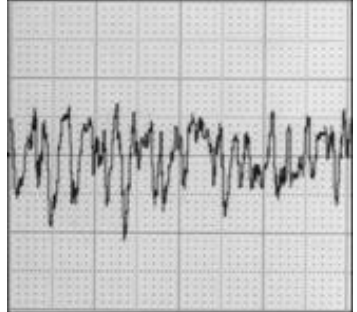
Data

Surface Colour			Black
Type			Compressible
Thickness	inch		0.077
Number of ply			3
Thickness tolerance	inch		0.0008"
Hardness	° Shore A		77
Surface Roughness, Rz	µm		6
Compressibility at 100 N/cm ²	inch		0.004
	%		6
Paper Release (max.=100) (*)	without ink		80
	with ink		-
Durability test (*)	Gauge loss	%	3
	Loss of Compress.	%	45
Cylinder Fitness at	4 N/mm	mm	0.28
	5 N/mm	mm	0.26
	6 N/mm	mm	0.24
Flexibility (*)	degree		31
Tensile Strength	N/mm		91
2 % Modulus	N/mm		57
Elongation at Break	%		3.4
UV Ink Swell test, Thickness Increase in 24 h			0.00
Stickiness	N/25mm		N/A

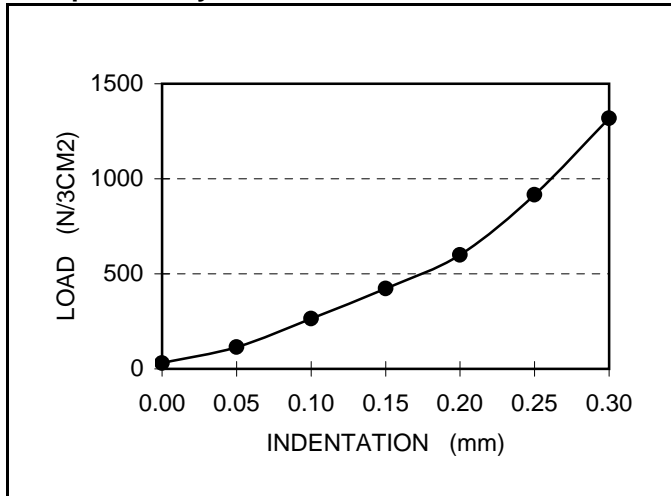
Cross Section



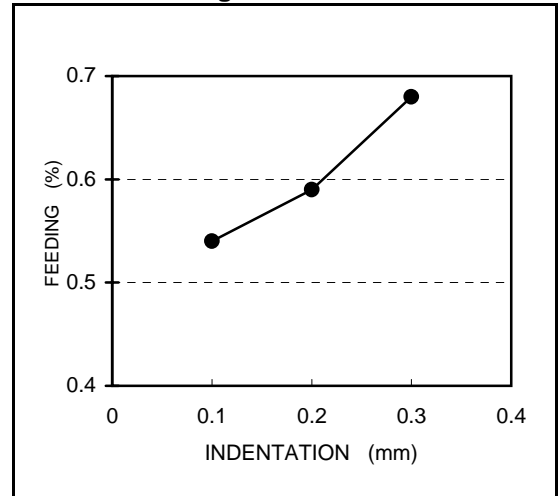
Surface Profile



Compressibility Curve



Relation Feeding / Indentation



Indentation / mm	0.00	0.05	0.10	0.15	0.20	0.25	0.30
Compressibility N/3cm ²	30	114	265	422	600	915	1318
Feeding	-	-	0.54	0.59	0.68	-	-

Applications

- UV Printing
- Plastic Printing
- Cup Printing

Features

- Strong Swell Resistance against UV inks & solvents
- Strong against Surface Abrasion
- Absorb Static Electricity

(*) Fujikura Testing Method

Fujikura Composite America, Inc.

